

The background of the entire slide is a dark blue field with a faint, light blue technical drawing of a mechanical assembly. The drawing includes various components like a pump housing, a motor, and a shaft, with numerous dimension lines and numerical values (e.g., 1680, 920, 130, 18, 5.2, 1550, 1680, 1500, 1720, 120, 130, 920, 44.9) scattered throughout. The drawing is oriented vertically, with the main assembly running from top to bottom.

SNF

**FLOQUIP
ENGINEERING
COMPANY**

www.floquipinc.com

The background of the entire slide is a dark blue field with a faint, light blue technical drawing of a mechanical assembly. The drawing includes various components like a pump housing, a motor, and a shaft, with numerous dimension lines and numerical values (e.g., 1680, 920, 130, 18, 5.2, 1550, 1680, 1500, 1720, 120, 130, 920, 44.9) scattered throughout. The drawing is oriented vertically, with the main assembly running from top to bottom.

SNF

**FLOQUIP
ENGINEERING
COMPANY**

www.floquipinc.com

The background of the entire page is a technical drawing in white lines on a dark blue background. The drawing depicts a complex mechanical assembly, likely a pump or engine component, with various parts, bolts, and structural elements. The drawing is oriented vertically, with the main body of the component on the right and some internal or base components on the left. The lines are clean and precise, typical of engineering blueprints. The overall aesthetic is professional and technical.

SNF

**FLOQUIP
ENGINEERING
COMPANY**

www.floquipinc.com



SNF® is the world's leading manufacturer of water-soluble polymers such as organic coagulants and polyacrylamide (PAM) based flocculants. These products are used extensively in municipal and industrial water and wastewater treatment markets, in addition to a variety of specialty applications.

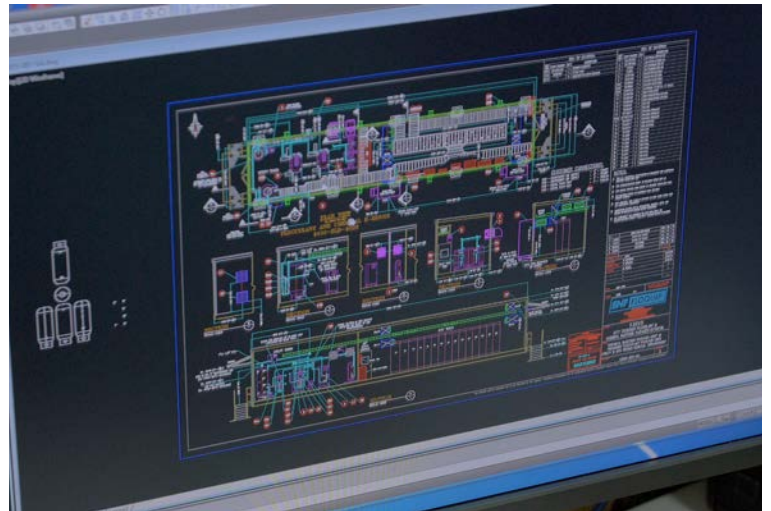
SNF FLOQUIP® is the global engineering and equipment division of SNF and provides top-of-the-line related engineering, equipment, and support services to reinforce SNF's core chemical (polymer) manufacturing, sales, and marketing objectives. FLOQUIP is committed to being the industry leader in the engineering/design, fabrication, assembly, testing, and installation oversight of chemical storage, makedown, feed, and dosage control equipment. Located at our 160,000 square foot facility in Midway, GA, FLOQUIP supplies standard, as well as large custom-built systems. With more than 50 years of engineering experience in virtually every market that demands chemical usage, FLOQUIP's goal is to incorporate that experience and applications expertise into everything we do.

WHAT FLOQUIP OFFERS

Our focus in providing a variety of in-house services is to meet the important needs of our customers while satisfying critical regulatory, mechanical, electrical, product, and performance requirements. These services are also made available, all or in part, regardless of the industry or application, for other non-polymer or non-chemical related opportunities in the following areas:

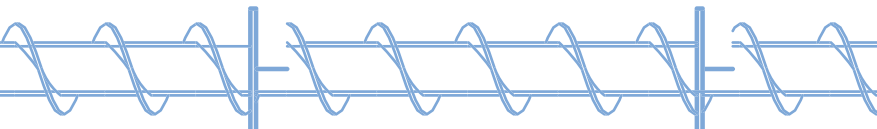
ENGINEERING

FLOQUIP offers many facets of engineering services at our Midway location: estimating, project management, systems design, CAD drawings, control systems, PLC programming, and instrumentation.



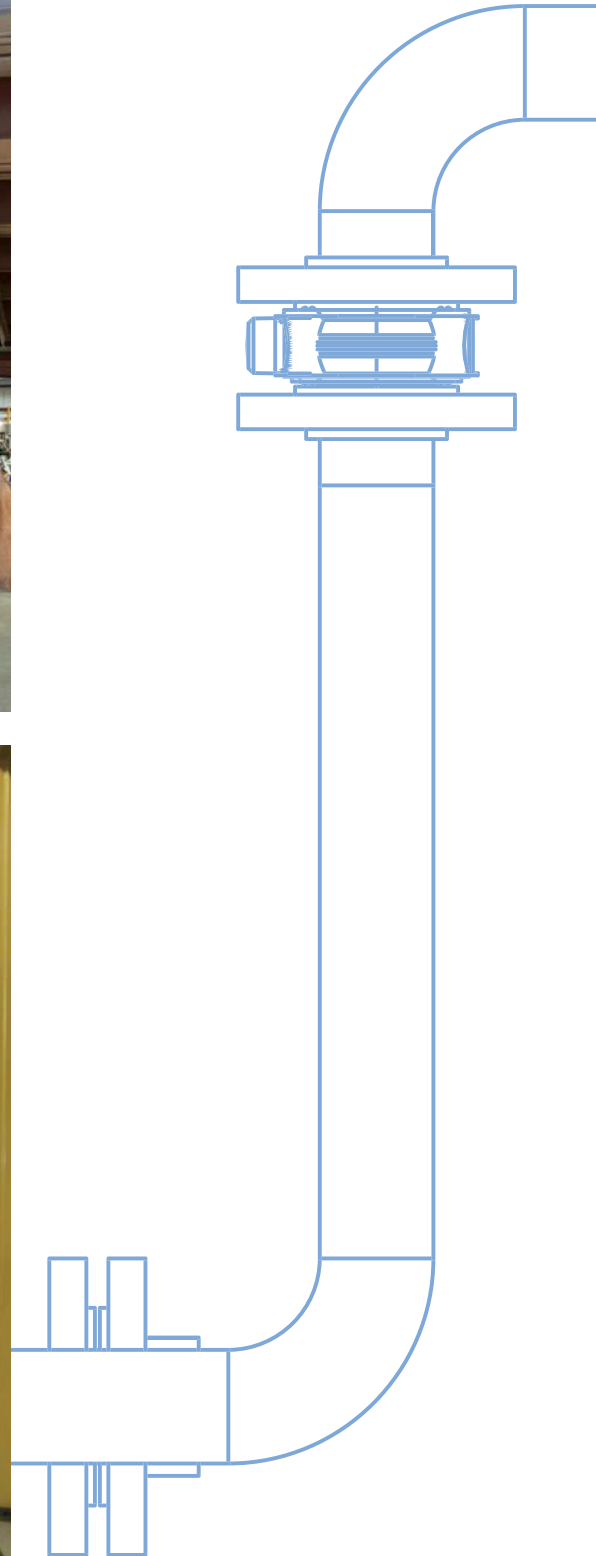
FABRICATION

Fabrication services involves welding of carbon and stainless steel materials, as well as building equipment bases and piping systems.



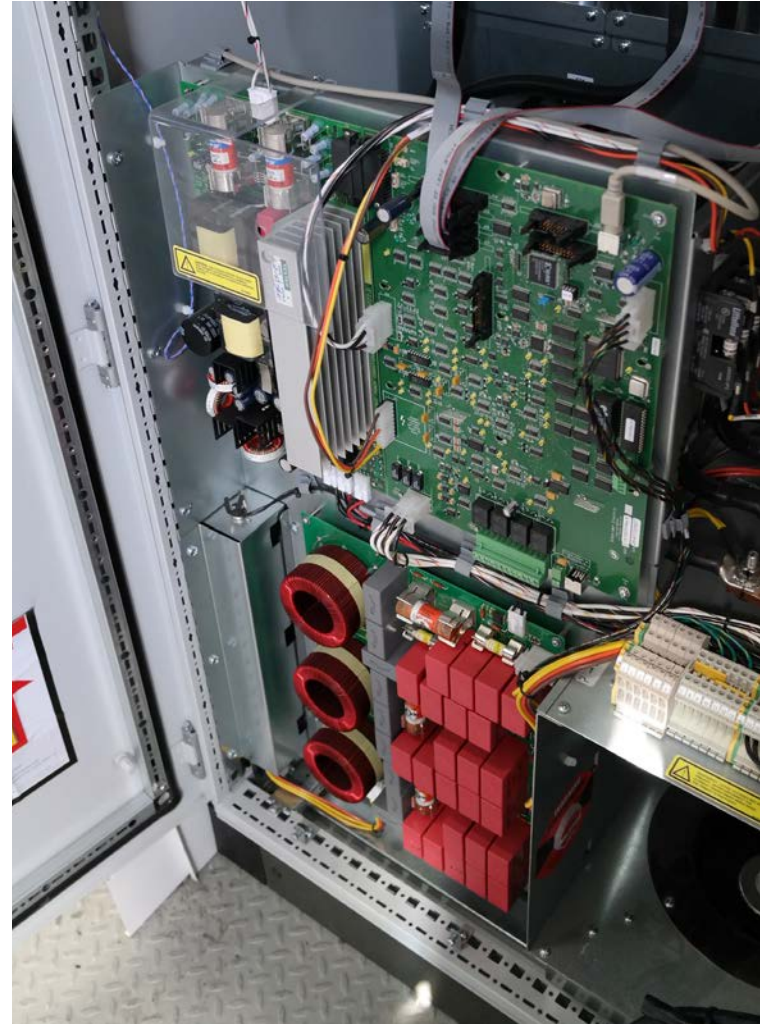
ASSEMBLY

We assemble everything from small skid-based systems to container or trailer-based systems, as well as large purpose-built systems.



ELECTRICAL

FLOQUIP designs and builds electrical control panels. We also wire entire skid and trailer-based systems.



TESTING

Parts, pieces of equipment, or systems we build can be tested by various means to simulate real-life field conditions, conduct factory acceptance testing, or for Quality Control purposes.



QUALITY AND CONTINUOUS IMPROVEMENT

FLOQUIP commits to maintaining high standards for our customers to ensure safety, quality, and reliability of what we produce. These standards, based on principles of continuous improvement, also act as strategic tools to help minimize cost, waste, and errors to allow us to be productive and competitive.

To that end, we have attained several North American certifications:



ISO 9001:2008 (International Organization for Standardization) - Procedural Standards

- Ensures that product and services provided meet customer requirements
- Ensures consistency in day to day operations
- Allows FLOQUIP to create and retain satisfied customers
- Improve efficiency and reduce operating costs

ASME B31.3 (American Society of Mechanical Engineers) - Piping Standards

- Ensures that FLOQUIP meets the requirements of ASME process piping code
- Rules pertain to design, materials, workmanship and inspection



CSA: Canadian Standards Association - Electrical Standards

- FLOQUIP electrical panels meet safety standards required by the Canadian Electrical Code



CWB: Canadian Welding Bureau - Structural Standards

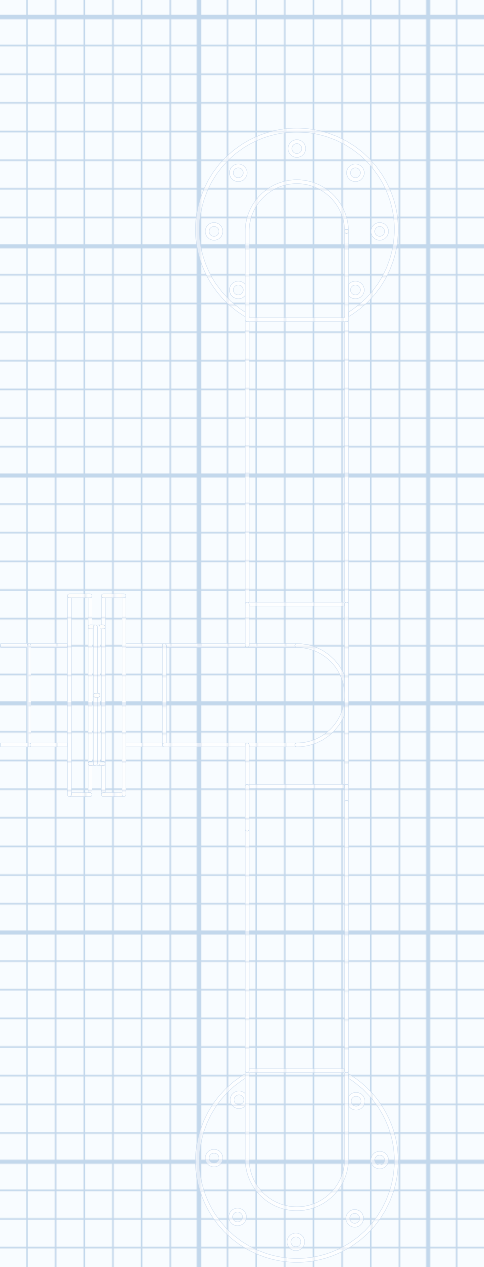
- FLOQUIP structural welding, supervision and welders (W47.1) meet Canadian standards & codes (Code W59 Structural Welding Code for Canada)



A660: CSA Certification - Steel Building Standards

- Certification for manufacturers of steel buildings covering design, personnel, material, fabrication and shipping (newer requirement in Canada)





Please contact SNF FLOQUIP today to see how we may help provide solutions to your specific needs or requirements.

SNF FLOQUIP®
548 Industrial Boulevard
Midway, GA 31320

Phone: 912.884.8726
Email: contact@floquipinc.com
www.floquipinc.com

CORPORATE LOCATIONS

SNF Holding Company

1 Chemical Plant Road
Riceboro, GA 31323
Phone: 912.884.3366
Fax: 912.884.5031
www.snf.us

SNF SAS

ZAC de Milieux
42163 Andrézieux Cedex
FRANCE
Tel: + 33 (0)4 77 36 86 00
Fax: + 33 (0)4 77 36 86 96
www.snf-group.com

